

RoHS

H.F

NOTES:

1.MATERIAL:  
HOUSING MATERIAL: HIGH-TEMPERATURE THERMOPLASTIC(UL94 V-0)  
COLOR: BLACK, Halogen-free

TERMINAL MATERIAL: COPPER ALLOY  
MID PLATE MATERIAL: STAINLESS STEEL  
SHELL MATERIAL: STAINLESS STEEL

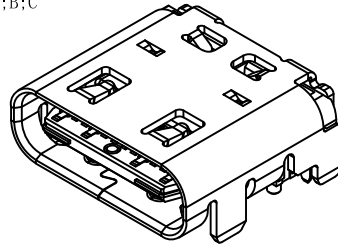
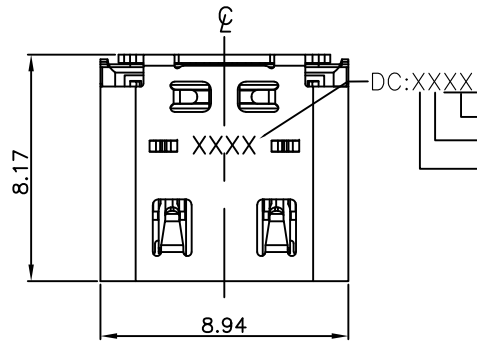
2.Electrical characteristics:

- 2-1.LLCR:  
VBUS & GND PINS: 40mΩ/PIN MAX.  
OTHER PINS: 40mΩ/PIN MAX.
- 2-2.CURRENT RATING: 6.5 A Max.
- 2-3.VOLTAGE RATING: 20.0 V.
- 2-4.INSULATION RESISTANCE: 100MΩ MIN.
- 2-5.Operating Temperature:-20°C~+85°C

3.PLATING:

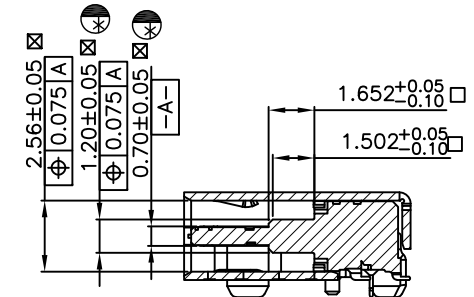
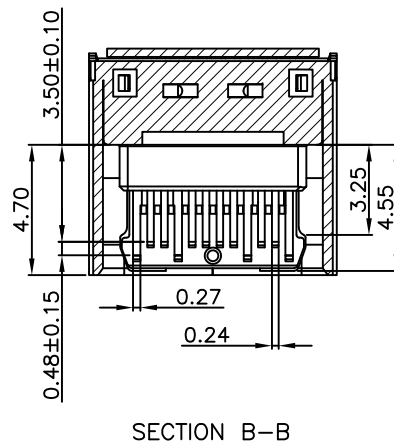
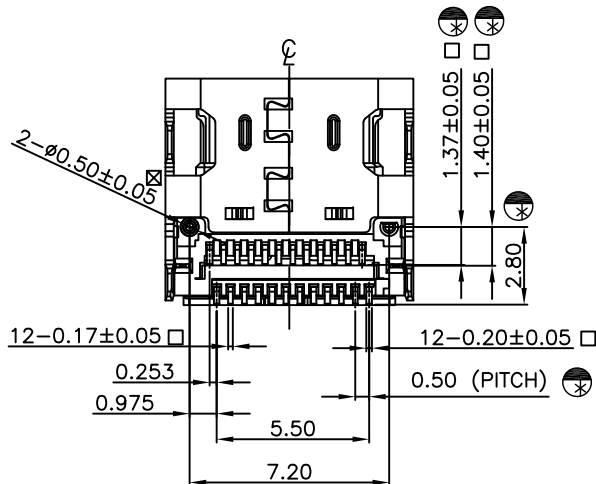
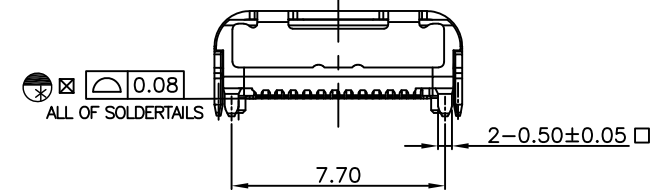
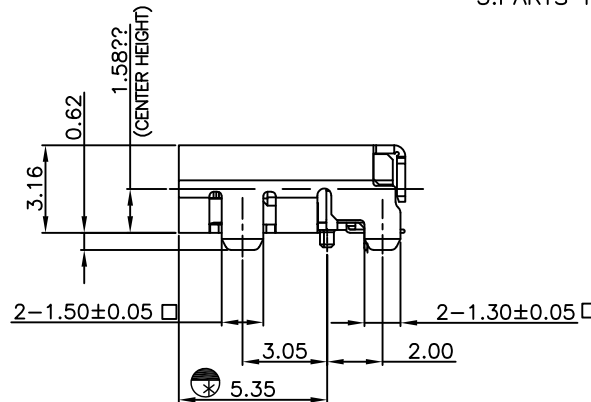
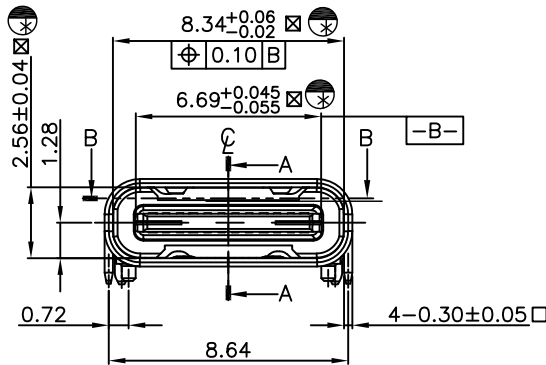
CONTACT: CONTACT AREA PLATED WITH GOLD  
SOLDER AREA PLATED WITH 3u" GOLD  
NICKEL 50u+ Min. UNDER PLATED OVERALL  
MID PLATE: OVERALL PLATED WITH NICKEL  
SHELL: OVERALL PLATED WITH NICKEL

4.□ MANUFACTURE&QC INSPECTION REFERENCE.



5.PARTS NO: AQTSF0-24-R1X

- 2:CONTACT AREA PLATED WITH 5u" GOLD
- G:CONTACT AREA PLATED WITH G/F GOLD
- B:CONTACT AREA PLATED WITH 15u" GOLD
- C:CONTACT AREA PLATED WITH 30u" GOLD



SECTION A-A

CUSTOMER DRAWING

銘運股份有限公司  
Aquatech Corporation

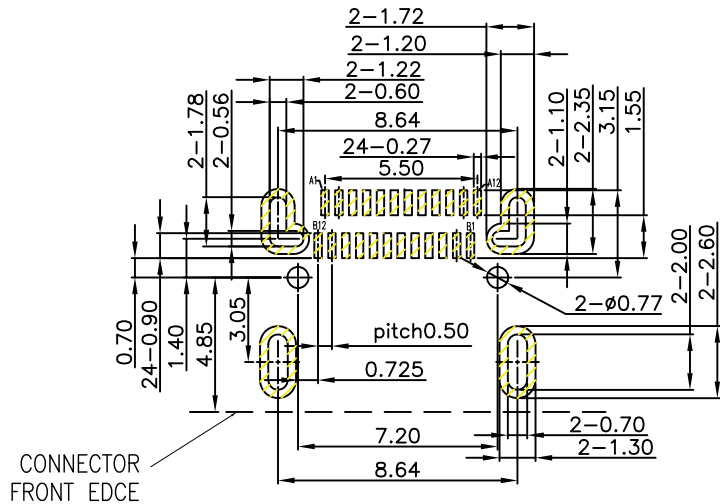
SER	AREA	DESCRIPTION	CHK	DATE

UNLESS OTHERWISE SPECIFIED TOLERANCES ARE  
 X. ±0.30  
 X.X ±0.20  
 X.XX ±0.10  
 X.XXX ±0.05  
 ANG.X ±1°  
 ANG.X.X ±0°50'

APPROVED BY	DATE	TITLE
CHECKED BY	DATE	USB TYPE-C REC. CONN.
DRAWN BY	DATE	PART NO AQTSF0-24-R1X
DRAWING NO JEN20006		SCALE 1:1
REV A	SHEET 1/3	PAGE 1

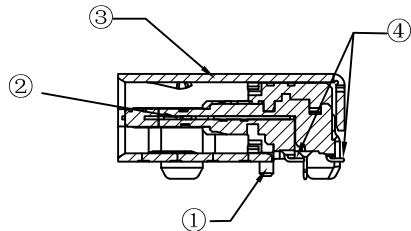
RoHS

H.F



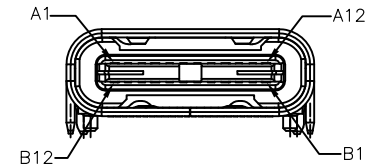
RECOMMENDED P.C.B. LAYOUT  
TOLERANCE UNSPECIFIED ±0.05mm

CONNECTOR FRONT EDGE



PARTS NO: AQTSF0-24-R1X

- 2: CONTACT AREA PLATED WITH 5u" GOLD
- G: CONTACT AREA PLATED WITH G/F GOLD
- B: CONTACT AREA PLATED WITH 15u" GOLD
- C: CONTACT AREA PLATED WITH 30u" GOLD



GND	TX1+	TX1-	VBUS	CC	D+	D-	SBU1	VBUS	RX2-	RX2+	GND
A1	A2	A3	A4	A5	A6	A7	A8	A9	A10	A11	A12
GND	RX1+	RX1-	VBUS	SBU2	D-	D+	Vconn	VBUS	TX2-	TX2+	GND
B12	B11	B10	B9	B8	B7	B6	B5	B4	B3	B2	B1

PIN ASSIGNMENT

④	TERMINAL	24	C18400-H T=0.12	OVERALL UNDER :PLATED WITH NICKEL 50u"~100u" CONTACT AREA :PLATED WITH GOLD SOLDER AREA: PLATED WITH 3u"Min GOLD
③	SHELL	1	SUS304 1/2H T=0.30	NICKEL 50u"MIN
②	GND	1	SUS301R-H T=0.12	NICKEL 50u"MIN
①	BODY	1	LCP E6808UHF+40%GF	BLACK
NO	DESCRIPTION	QTY	MATERIAL	PLATING & COLOR

CUSTOMER DRAWING

銘運股份有限公司  
Aquatech Corporation

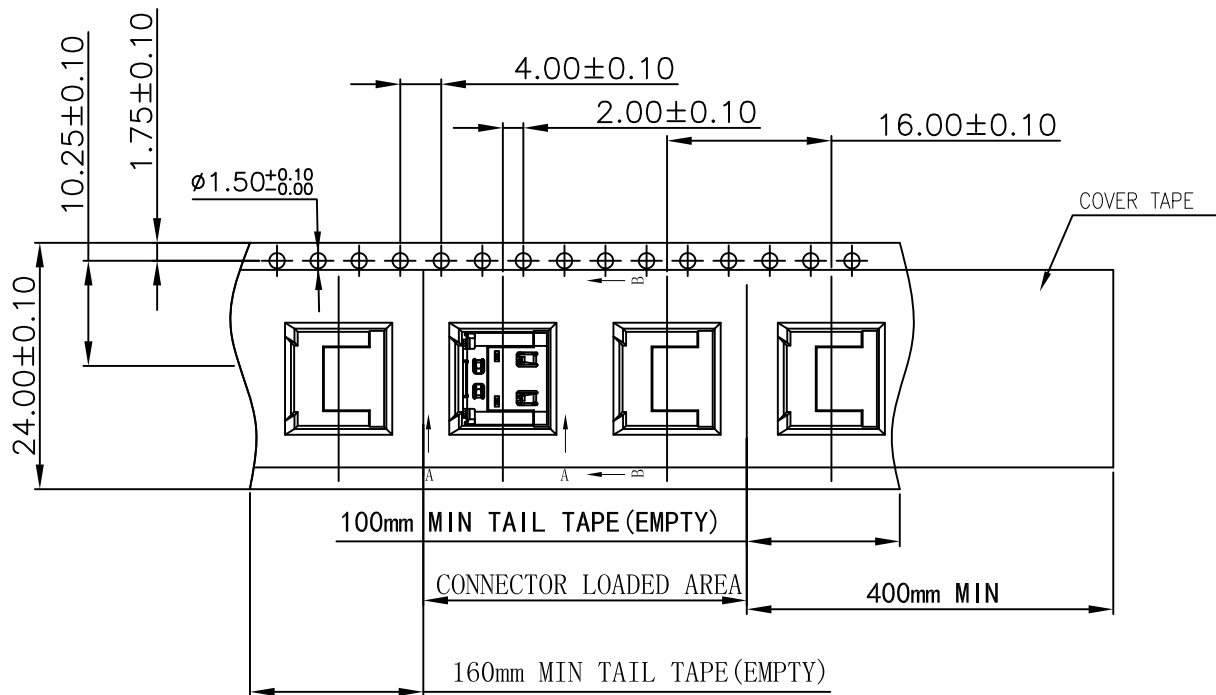
UNLESS OTHERWISE SPECIFIED TOLERANCES ARE				APPROVED BY		DATE		TITLE	
X	±0.30	X.X	±0.20					USB TYPE-C REC.	
X.XX	±0.10			CHECKED BY		DATE		CONN.	
X.XXX	±0.05			DRAWN BY		DATE		PART NO	
ANG.X	±1°							AQTSF0-24-R1X	
ANG.X.X	±0°50'							PAGE	
UNIT				SIZE		DRAWING NO		REV	
mm				A4		JEN20006		A	
SER				AREA		DESCRIPTION		CHK	
								DATE	
								SCALE	
								1:1	

RoHS

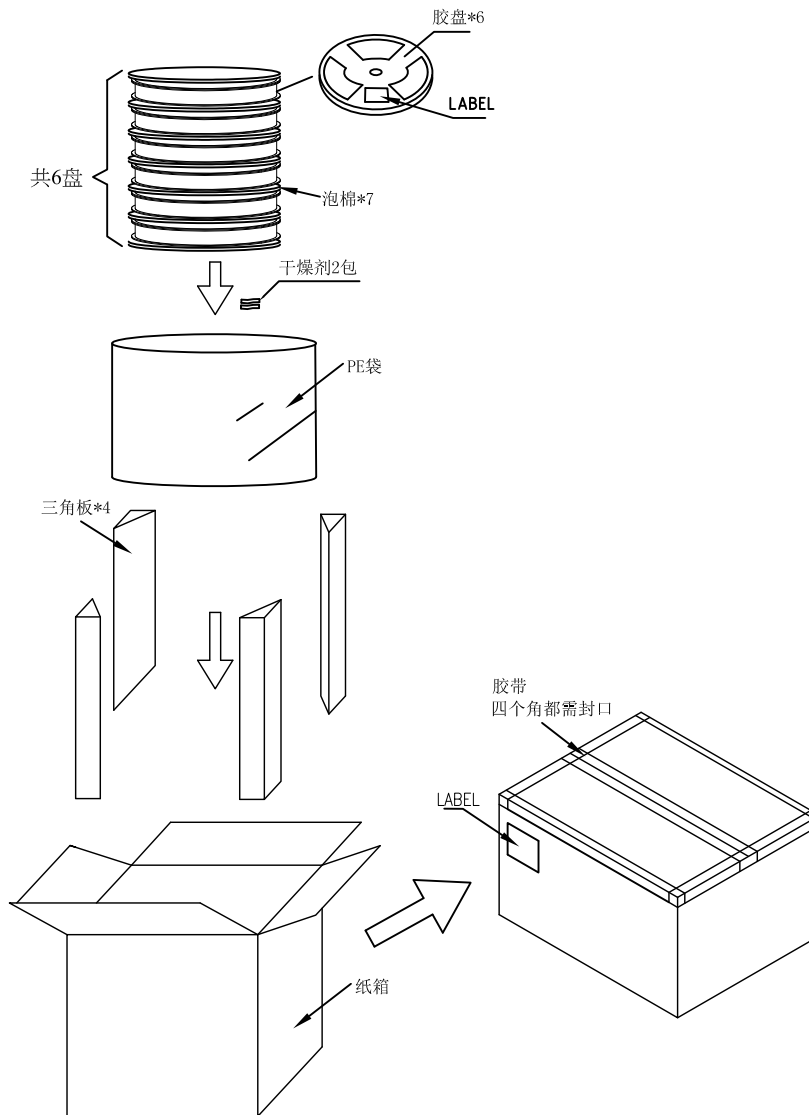
H.F

收料方向  
GATHER MATERIAL DIRECTION

客户放料方向  
INPUT MATERIAL DIRECTION



单卷包装数量: 前段空包颗数: 10颗, 实际包装零件颗数: 850颗, 后段空包颗数: 10颗).  
一箱包装数量: 每盘: 850颗, 每箱6盘 共计5100pcs/箱



PACKING DRAWING					銘運股份有限公司 Aquatech Corporation				
					UNLESS OTHERWISE SPECIFIED TOLERANCES ARE	APPROVED BY	DATE	TITLE	
					X. ±0.30	CHECKED BY	DATE	USB TYPE-C REC. CONN.	
					X.X ±0.20	DRAWN BY	DATE	PART NO	PAGE
					X.XX ±0.10			AQTSF0-24-R1X	1
					X.XXX ±0.05				
					ANG.X ±1°				
					ANG.X.X ±0°50'				
SER	AREA	DESCRIPTION	CHK	DATE	UNIT	DRAWING NO	REV	SHEET	SCALE
					mm	TSF0-24-R1X	A	3/3	1:1
					SIZE				
					A4				